

Building with Nature: An Introduction to Green Infrastructure



The "What & Why" of Green Infrastructure

A natural approach to water management.

It uses vegetation and soil to manage rainwater right where it falls.

Green vs. Gray Infrastructure



Green infrastructure mimics nature.



Gray infrastructure relies on pipes and drains.

Delivers a wide range of benefits.



Reduces flooding,



improves water quality,



lowers urban heat,



and enhances biodiversity.

Common Green Infrastructure Solutions in Action

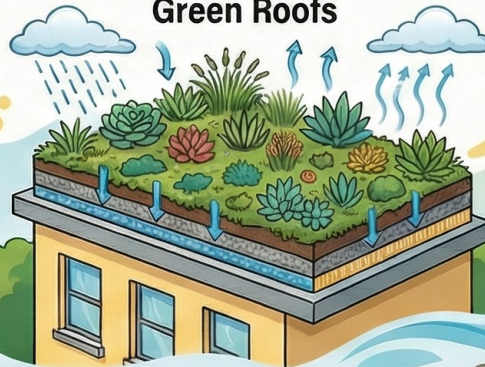
Rain Gardens



Rain Gardens (Bioretention)

Depressed gardens that collect, hold, and filter runoff from roofs and pavement.

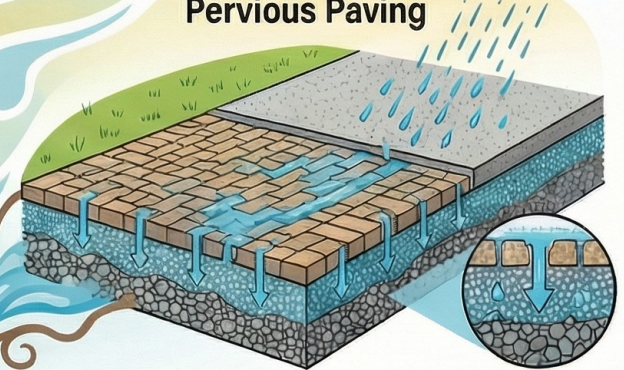
Green Roofs



Green Roofs

Vegetated roof layers that absorb rainfall, reduce runoff, and provide building insulation.

Pervious Paving



Pervious Paving

Porous surfaces for driveways and parking lots that let water soak into the ground.