

New Jersey Stormwater Design: A Process Overview

Phase 1: Planning & Analysis

Phase 2: BMP Design & System Verification

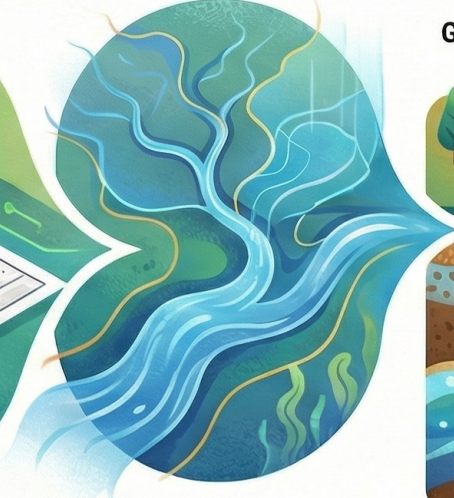
Establish Regulatory Framework & Site Layout



Establish Regulatory Framework & Site Layout

Determine all rules and apply low-impact development principles to the site plan.

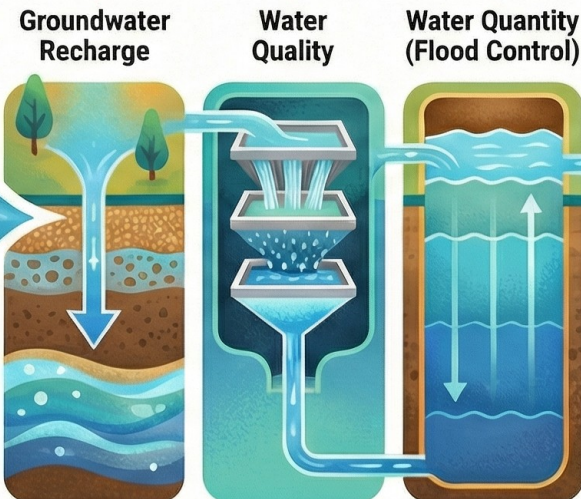
Map & Model Water Flow



Map & Model Water Flow

Identify discharge points, map catchment areas, and model pre- and post-development runoff.

Size BMPs for 3 Key Requirements



Average
Precipitation Year

NJ Water Quality
Design Storm
(NJWQDS)

2-year, 10-year,
& 100-year storms

Supporting Detail: Design systems to meet groundwater recharge, water quality, and flood control standards.

Engineer the Conveyance System



Engineer the Conveyance System

Design the storm sewer pipe network using the design storm specified by local authorities.

Verify System for Extreme Events



Verify System for Extreme Events

Conduct hydraulic modeling for emergency management using storms exceeding design standards (e.g., 500-year storm).